

## Setting Up the MIXTRACK PRO in Traktor

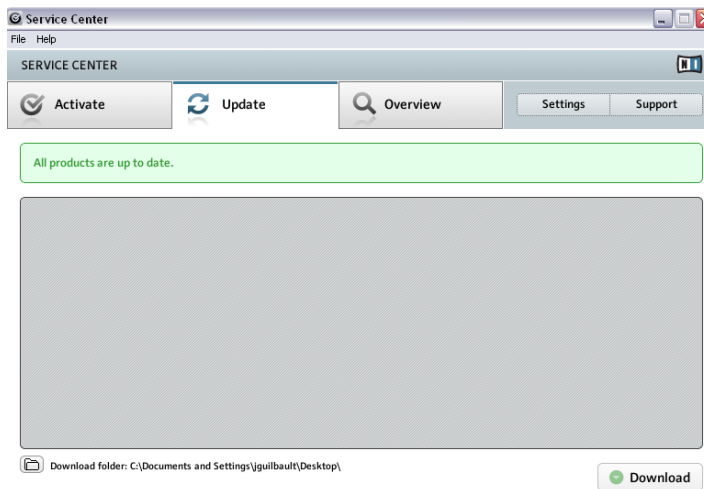
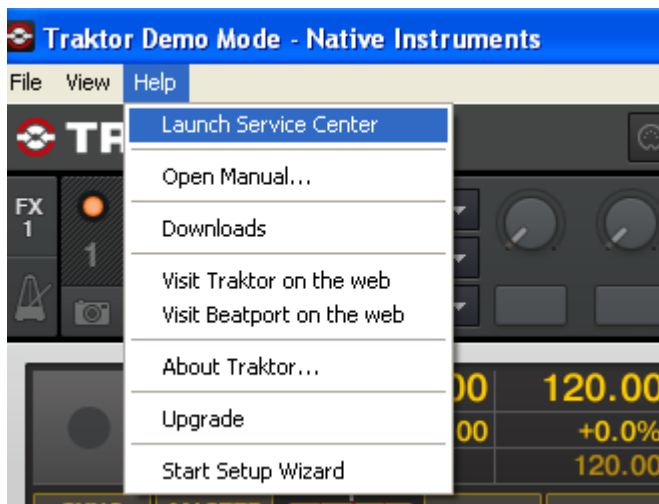
### Contents

1. [Install the latest version of Traktor](#)
2. [Configure the Controller Settings](#)
3. [Download and Install ASIO4All \(Windows Only\)](#)
4. [Configure the Audio Device Settings](#)

### Install the latest version of Traktor

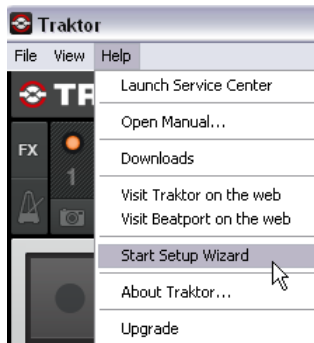
Before you begin, make sure you have the latest version of Traktor installed.

Launch Traktor, then go to **Help > Launch Service Center**. Select the **Updates** tab and make sure you download any **Traktor** updates you see.



## Configure the Controller Settings

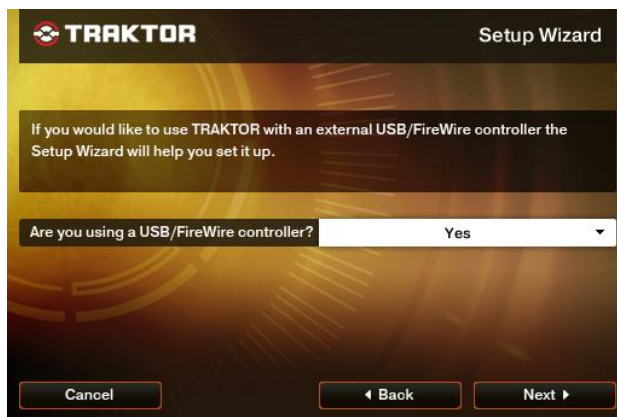
1. In Traktor, go to **Help > Start Setup Wizard**.



2. In the window that opens, click **Next**.




3. Next, you'll be asked, **Are you using a USB/FireWire controller?** Choose **Yes**, then click **Next**.



4. On the next page, next to **Choose your manufacturer**, choose **Numark**.

The selection you make next to **Choose your model** will depend on which version of Traktor you are using.

 **IMPORTANT** making the incorrect selection in this step will prevent your controller from controlling the software properly.

**Traktor LE** users should choose **Mixtrack LE** here.

**Traktor PRO** and **Traktor Duo** users should choose **Mixtrack** here.




5. Click **Next**, then click **Finish** on the last page to close the Setup Wizard Window.

## Download and Install ASIO4All (Windows Only)

ASIO4All is a low latency audio driver which allows Traktor to access the two sets of stereo outputs in the MIXTRACK PRO's built-in audio device.

1. Visit <http://www.asio4all.com>.
2. Click the link titled [ASIO4ALL 2.10 - English](#) to download the installer.
3. Once downloaded to your computer, launch the installer **ASIO4ALL\_2\_10\_English.exe**. Once installed, proceed to the next section of this guide.

## Configure the Audio Device Settings

1. Open the **Preferences** menu in Traktor by clicking the  button in the upper-right of the screen.
2. In the upper-left of the window that opens, select **Audio Setup**.

3. Select the MixTrack Pro as the **Audio Device**.

### Windows

1. For **Audio Device**, select **ASIO4ALL v2**.

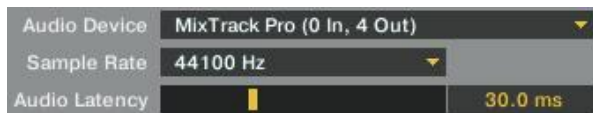


2. Next, click **Settings**. In the window that opens, click the selection button next to **USB Audio Device** to highlight. This is the MIXTRACK PRO. Once selected, close this window.



### Macintosh

- For **Audio Device**, select **MIXTRACK PRO**.



4. Next, on the right-hand side of the window, select **Output Routing**. The MIXTRACK PRO has two sets of stereo outputs.

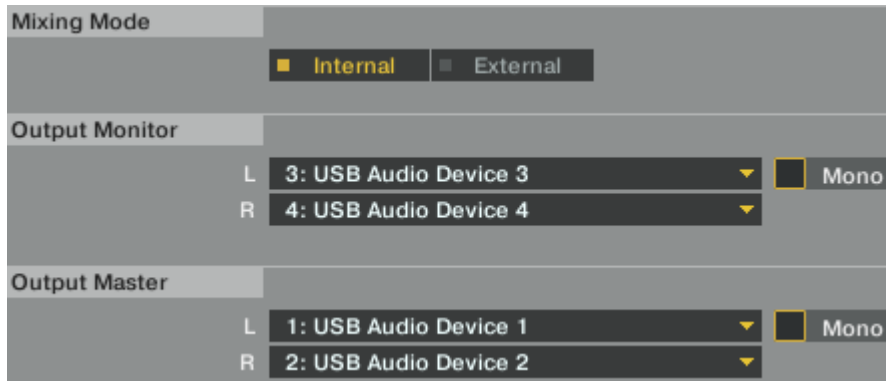
### Windows

1. Set **Mixing Mode** to **Internal**.
2. Set **Output Monitor** to...

L     **3: USB Audio Device 3**  
R     **4: USB Audio Device 4**

3. Set **Output Master** to...

L     **1: USB Audio Device 1**  
R     **2: USB Audio Device 2**



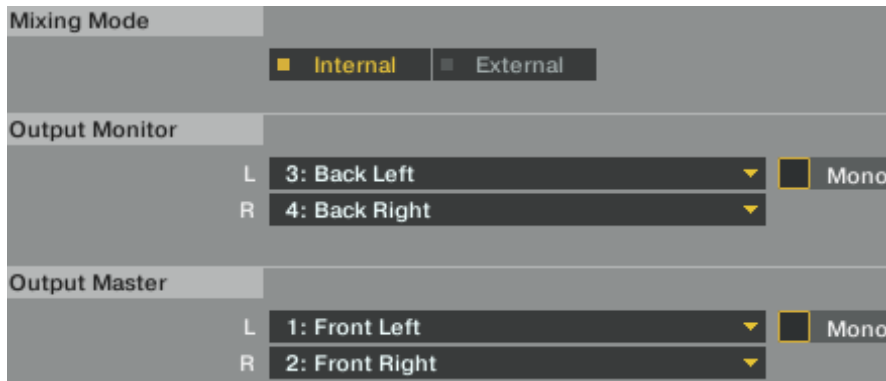
## Macintosh

- Set **Mixing Mode** to **Internal**.
- Set **Output Monitor** to...

**L**     **3: Back Left**  
**R**     **4: Back Right**

- Set **Output Master** to...

**L**     **1: Front Left**  
**R**     **2: Front Right**



You should be set up and ready to go.